

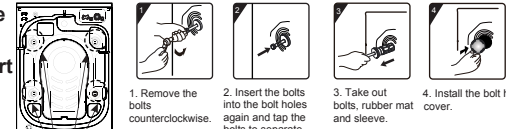
Brief installation guide to roller washing machine

Please install the washing machine in accordance with the following steps. For details, please refer to the Installation Guide.

Before use

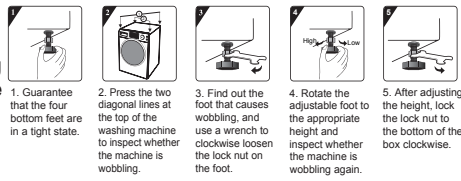
- Before use, the foam base and the foam inside the machine must be removed, and the rear transport bolts and sleeves should be removed; otherwise, noise and malfunction will occur.
- Do not connect any hot water source.
- The water injection test should be carried out on the washing machine before delivery. Therefore, if there is some residual water in the drum, it is normal. It is recommended to run a quick empty-drum washing program before the first use.
- Do not only wash a piece of clothing to prevent the unbalanced dewatering alarm.

Remove the transport bolts

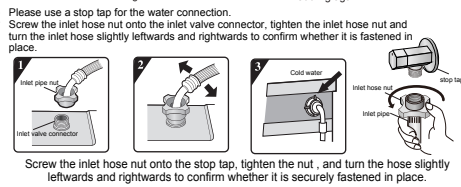


There are a total of 4 transport bolts.

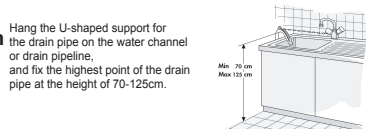
Level the washing machine



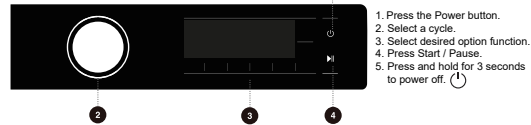
Connect the inlet pipe



Install the drain pipe



Control unit



Wi-Fi connection

- Open ConnectLife on your smartphone or tablet PC;
- Bind your device on ConnectLife as follows:
 - Click "Start here Add appliances" in "Home" page, or click "Add appliances" in "Devices" page, or click "+".
 - Select "Washing Machine" or click "Scan QR/BAR code" or "Manual entry" below.
 - Scan the QR/BAR code on the device or enter the AUD/SN manually. If you can not find it, click ? for instructions.
 - Click "SET UP APPLICATION".
 - Read the instructions, operate the device into the Networking and Binding state, and click "NEXT".
 - At this time, the app starts to search for devices, and you can select the device to be connected to the network from the search list. If it is not found, check your bluetooth whether turn on. Bluetooth should be kept it on at all time. And then click "NEXT".
 - Select your home Wi-Fi, enter the password, then click the "CONNECT". The appliance will start networking and binding.
 - After binding successfully, you can set the device name and room.
 - Now, the device can be control remotely by APP.

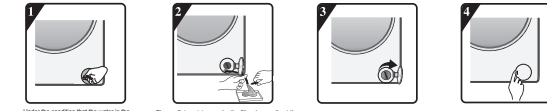
*When the " " display light on the display window is not on, you cannot remotely control the machine through the mobile phone. To enable this function, press the " " button on the dashboard.

Washing machine maintenance

After the completion of washing program, please be sure to turn off the tap and unplug the power cord to avoid accidents.

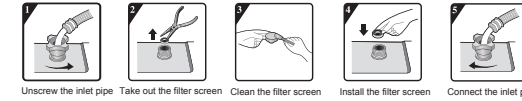
Regularly clean the draining pump filter

Clean the draining pump filter at least three to five times every year. Tip: make sure that the water has cooled before operation to avoid burns.



Regularly clean inlet filter screen (please reserve the inlet filter screen)

In case of slow water supply or water supply failure, please check and clean the inlet filter screen in time. The specific operation is as follows:



Common code and solution

When the washing machine is not working normally and the display shows the following code, it may not be a fault. Please carry out the corresponding treatment according to the followings.

| Display code | Abnormal phenomenon | Recommended solution |
|--------------|-----------------------------|--|
| F01 | Water supply abnormality | Whether the tap is fully open and has sufficient water pressure, whether the inlet pipe is frozen, knotted or blocked (refer to the "Maintenance" in the Manual). After eliminating the above fault, press "Start/Pause" to continue the operation. If the fault occurs again, unplug the power cord and contact the after-sales service department. |
| F03 | Water drainage abnormality | Water in the washing machine drum is not drained off. Shut down the machine for inspection: inspect whether the draining pump is blocked and whether the drain pipe is frozen or knotted. After eliminating the above fault, press "Start/Pause" to continue the operation. If the fault occurs again, unplug the power cord and contact the after-sales service department. |
| F12 | Lock abnormality | Normal locking or unlocking cannot be achieved. Inspect whether the door is closed or not. Press "Start/Pause" to relieve the fault and open or lock the door again. If the fault occurs again, unplug the power cord and contact the after-sales service department. |
| F24 | Too high water level | Press "Start/Pause" to relieve the fault and resume the water supply operation. If the fault occurs again, unplug the power cord and contact the after-sales service department. |
| F39 | Soap box closing failure | After closing the soap box in place, press "Start/Pause" to relieve the fault and resume program operation. If the fault occurs again, unplug the power cord and contact the after-sales service department. (Note: this code applies to some automatic adding types) |
| Others | Electronic module fault | Press the "On/Off" for 3 seconds to shut down the machine, and then turn on the machine after 10 seconds to eliminate this fault. If the fault occurs again, unplug the power cord and contact the after-sales service department. |
| FLUTO | Automatic weighing | Indicate that the washing machine is automatically weighing the clothing, and no user operation is required. |
| Unb | Unbalanced dewatering alarm | Press the "On/Off" for 3 seconds to shut down the machine, open the machine door, untangle the tangled clothing, and select single dewatering program for dewatering. |
| End | The end of the program | The screen displays "End", indicating that the washing process is completed. |

If you have any question in use, please contact 1 800 447 367