















































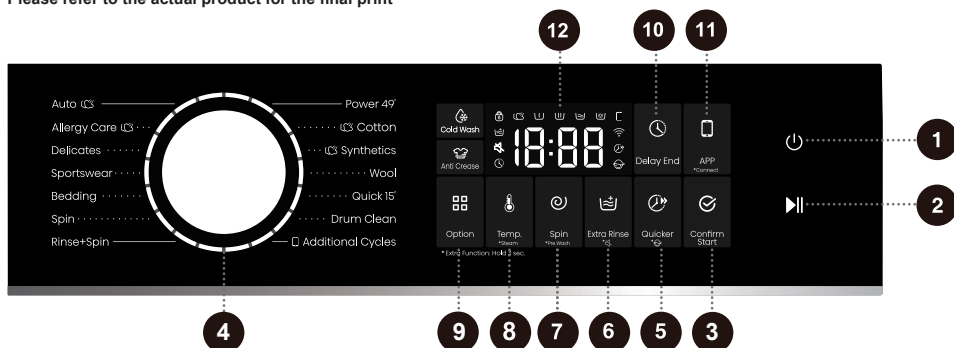





# PROGRAMS AND FUNCTIONS

## CONTROL PANEL

Please refer to the actual product for the final print







**1 Power**   
Used to turn on/off the device power.

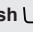
**2 Start/Pause**   
Used to enter the ready-to-start state, activate the startup process, and pause the program.

**3 Confirm Start**  
Used to confirm and ultimately start the device. It must be pressed within 60 seconds after the "Start/ Pause" key is pressed when the device is in the start preparation state.

**4 Cycle Selector**  
Turn the knob to select the program.


**5 Quicker**   
Short press the button to reduce the washing time of the program.  
\*   
Long-press turns the Child Lock function on/off.

**6 Extra Rinse**   
Press to increase the number of extra rinses for the program.  
\*   
Press and hold to turn the mute function on/off.

**7 Spin**  
Press to select the program's spin speed.  
\* Pre Wash   
Long press to turn on/off the prewash function of the program.

**8 Temp.**  
Press briefly to select the washing temperature of the program.  
\* Steam  
Press and hold to activate/deactivate the steam function.

**9 Option**  
Press this button to select additional functions for the program.


**10 Delay End**   
This function allows you to schedule laundry at your convenience.

**11 APP**   
Short press to turn on/off the device's APP remote control.  
\* Connect   
Long press to turn on/off the Wi-Fi function of the device.

**12 Display**  
Used to display the remaining time of the program, reservation time, fault code, and other related information.

\*Extra Function: Hold 3 sec.  
For extra function:  
Press and hold for 3 seconds.



Program	Maximum load (kg)	Maximum speed (rpm)	Program description
 <b>Additional Cycles</b>			
<b>Pet</b> (-, 20°C, 30°C, 40°C, 60°C)	4.5	1400	It is suitable for washing clothes with pet hair.
<b>Down</b> (-, 20°C, 30°C, 40°C)	2	600	This program is suitable for machine-washable items filled with down, such as pillows, mattresses, and bed covers, as well as items filled with synthetic fibers.
<b>Baby Care</b> (40°C, 60°C, 90°C)	2	1400	This program is suitable for washing baby clothes, underwear, etc., and sterilizes them at high temperatures. It is not recommended to add softener for this program.

### Note for Additional Cycles:


Users need to enable the device's APP remote control module and connect the APP on their smartphone to use Additional Cycles. When the device is not connected to the network, the default program for Additional Cycles is "Pet". After connection, users can select "Pet," "Down," "Baby Care," and other programs in Additional Cycles through the mobile APP.


Australian Performance Testing Programmes:


The washing program 'Cotton+Press Option 5 Seconds' is recommended for a normally soiled load of 9kg.

### Note

- (1) Water temperature: Select the appropriate water temperature according to the selected washing program. When washing, follow the clothing manufacturer's washing label or instructions to avoid damaging the clothing.
- (2) The actual water temperature may differ from the stated program temperature.
- (3) Test results depend on water pressure, water hardness, inlet water temperature, room temperature, type and amount of laundry, degree of soiling, detergent used, power supply fluctuations and other options selected.
- (4) If you add too much laundry during the wash cycle, the laundry may be washed less efficiently because the machine initially detects a lower weight and adds less water. Insufficient water can also cause damage to the laundry and the wash time will be longer.
- (5) Drum Clean (if available): The drum must be emptied before using the Drum Clean program. It is recommended to run it at least once a month.
- (6) For descaling, use a descaling agent with corrosion protection (only use non-corrosive descaling agents and follow the instructions for use of the descaling agent). Run the "Drum Clean" (or other high temperature) program several times to remove any descaling agent residues and complete descaling. It is recommended to descale at least once every six months.

 The maximum or nominal load applies to laundry prepared in accordance with the relevant provisions of standard IEC60456.

 For better washing performance, we recommend that you fill no more than 2/3 of the drum volume when using the Cotton program.

 The loading procedure for the performance program is as follows:

From bottom to top, in order: first half of the bed sheets, then all bath towels, tablecloths, shirts, T-shirts, and pillowcases, followed by the remaining half of the bed sheets. All underwear, dishcloths, and handkerchiefs should be placed in the gaps.





















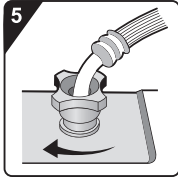
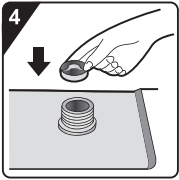
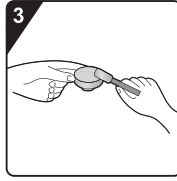
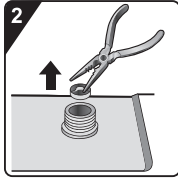
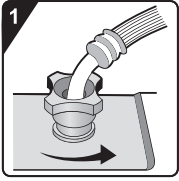




# CLEANING THE INLET FILTER

Check and clean the inlet filter regularly.

If the water inlet speed is slow, please clean the filter at the water inlet in time. The specific steps are as follows:




**1** Turn off the water tap and loosen the water inlet hose.

**2** Remove the inlet filter.


**3** Clean the inlet filter.

**4** Install the inlet filter.


**5** Connect the water inlet hose. Turn on the water tap and make sure there are no leaks at the connections.


 The inlet filter collects impurities and sediment in the water supply of the equipment. It is recommended to clean the inlet filter at least once every six months. If the water is hard or there are limescale deposits, the filter should be cleaned more frequently.

# CLEANING THE OUTSIDE OF YOUR WASHER

 Before cleaning the outside of your washer, please be sure to disconnect the machine from the power supply.

Clean the appliance housing and control panel with a soft, damp cloth. Then wipe them dry with a soft dry cloth.

 Do not use solvents, abrasive cleaners, or cleaning agents that may damage the device (please follow the recommendations and warnings provided by the cleaning agent manufacturer). Wipe the drum door with a damp cloth, and then wipe it dry with a soft dry cloth.

 If cleaning with a wet towel, make sure to ring out the water from the towel before wiping down the washer.

# TROUBLESHOOTING

The device is equipped with various automatic safety functions, ensuring that faults can be detected promptly and effective safety countermeasures can be initiated.


These faults are usually minor and can be eliminated in a very short time.

When the device cannot operate normally, the display will show abnormal information. Please refer to the warning content and take appropriate actions.

**If the fault persists after you have handled it yourself according to the recommended processing method, please contact after-sales service.**

If the user performs maintenance by themselves or hires non-manufacturer after-sales personnel, all consequences will be assumed by the user.

Fault Description	Recommended handling methods
<p><b>The device cannot start normally</b></p>	<ul style="list-style-type: none"> <li>◇ Check whether the device power supply is plugged into the power socket, and whether the power socket is working properly (you can test the power socket with other electrical devices).</li> <li>◇ Check if the machine door is closed properly.</li> <li>◇ Confirm whether the "Start/Pause" button and the "Confirm Start" button have been pressed effectively.</li> </ul>
<p><b>The device stops operating under normal working conditions</b></p>	<ul style="list-style-type: none"> <li>◇ Check if the machine door is closed properly.</li> <li>◇ Check for excessive foam. When the device detects excessive foam, it will enter a draining or standby state, or water will be taken to eliminate foam for defoaming treatment. The program is paused during this process, and the time displayed on the screen remains unchanged. After defoaming is completed, the device will automatically resume operation. If foam overflows and leaks, wipe away the foam to prevent corrosion of the device.</li> <li>◇ Check if the device has activated the alarm protection.</li> </ul>
<p><b>The time at which the program starts displaying may be extended or shortened by a certain duration</b></p>	<p>This is an adaptive adjustment made by the device in response to factors affecting the washing time.</p> <ul style="list-style-type: none"> <li>◇ Excessive foam.</li> <li>◇ Bulky clothing causes imbalance.</li> <li>◇ The low inlet water temperature causes the heating time to be prolonged.</li> </ul> <p>Due to the above reasons, the remaining time displayed by the program will be recalculated and updated in a timely manner (when the device is making imbalance adjustments, the displayed time remains unchanged). In addition, during the water intake phase, the device detects the load and adjusts the program time accordingly (fuzzy control).</p>
<p><b>After washing, there is residual detergent or other additives in the detergent drawer</b></p>	<ul style="list-style-type: none"> <li>◇ Check whether the detergent drawer is installed correctly and kept clean.</li> <li>◇ Check whether the water pressure is normal and whether the filter of the water inlet hose is blocked (refer to "MAINTENANCE AND CLEANING").</li> </ul>
<p><b>The equipment has an odor</b></p>	<ul style="list-style-type: none"> <li>◇ The odor may be caused by the rubber material inside the device. This is the smell of the rubber itself and will automatically disappear after a few uses.</li> </ul>

 Faults or problems caused by external factors (such as lightning strikes, power grid failures, natural disasters, etc.) are not covered by the warranty.

Fault Description	Recommended handling methods
<p><b>Abnormal sound/noise occurs during the washing process</b></p>	<ul style="list-style-type: none"> <li>◇ A foreign object, such as a key, coin, or pin, may have fallen into the drum. Shut down the equipment and check whether there is any foreign matter in the drum. If there is still abnormal noise after restarting, please contact after-sales service.</li> <li>◇ The laundry may be unevenly distributed in the drum. Pause the program and redistribute the laundry after unlocking the door.</li> </ul>
<p><b>The equipment vibrates intensely during spinning</b></p>	<ul style="list-style-type: none"> <li>◇ Check whether the device is placed level, with the four feet stably supported on a flat surface.</li> <li>◇ Check that the transport screws have been removed. Before using the equipment, the transport screws must be removed.</li> <li>◇ Check that all bottom support foam has been removed.</li> </ul>
<p><b>Poor Spin Effect</b></p>	<p>The device has a balance detection and correction system. If clothes are very heavy (such as bathrobes), the system detects imbalance and, after trying to spin dry multiple times, will automatically reduce the spin speed or even stop spinning to protect the device.</p> <ul style="list-style-type: none"> <li>◇ If clothes are still very wet after the spin cycle, take them out, shake them out, and select the spin cycle again.</li> <li>◇ Excessive foam will affect the spin effect. Please use an appropriate amount of low-foaming detergent.</li> <li>◇ Check whether the speed selection is set to "0" or "No Spin".</li> </ul>
<p><b>Water leakage problem occurs</b></p>	<ul style="list-style-type: none"> <li>◇ The water inlet hose is leaking. Check whether the tap and the water inlet hose connector are leaking. If there is leakage, wrap sealing tape around the end of the tap or replace it with a suitable tap. It is recommended to check whether the water inlet hose connector and the water inlet valve port are tightened. After tightening, the leakage will be eliminated.</li> <li>◇ The drain hose is leaking. For top-drain models, the drain hose fixing clip should not be removed; otherwise, the drainage will not stop.</li> <li>◇ The detergent drawer is leaking. The detergent drawer is not closed tightly. Please push the handle of the detergent drawer tightly to close it.</li> <li>◇ The door gasket is leaking. Check the door gasket for any foreign matter and clean it.</li> </ul>
<p><b>Excessive wrinkling</b></p>	<ul style="list-style-type: none"> <li>◇ Clothes were not taken out of the machine in time. After the washing program is completed, please take out the clothes from the machine in time.</li> <li>◇ The device is overloaded. The drum should not be tightly packed with clothing, and the door should close easily.</li> <li>◇ The spin speed may be too high. Set the appropriate speed for the clothing type.</li> </ul>

## DRYING MALFUNCTION (applicable to models with drying function)

Fault Description	Recommended handling methods
<b>Appliance not drying</b>	<ul style="list-style-type: none"> <li>◇ Check if a drying program has been set.</li> <li>◇ Check whether the water tap is turned off.</li> <li>◇ Check if the machine door is closed properly.</li> <li>◇ Check if the load of laundry is excessive (refer to the "PROGRAM TABLE" for the recommended capacity for the selected program). Remove some items and restart the drying cycle.</li> </ul>
<b>Insufficient drying</b>	<ul style="list-style-type: none"> <li>◇ Check if the load of laundry is excessive. Overloading can result in poor drying performance and may cause wrinkles. Dry the load in separate batches.</li> <li>◇ Check whether clothes that are difficult to dry (such as thick cotton) are mixed with clothes that are easy to dry (such as synthetic fibers).</li> <li>◇ Dry different types of clothes separately.</li> </ul>
<b>Drying time is too long</b>	<ul style="list-style-type: none"> <li>◇ Check if the load of laundry is excessive (refer to the "PROGRAM TABLE" for the recommended capacity for the selected program). Remove some items and restart the drying cycle.</li> <li>◇ Insufficient spin of laundry (refer to the "POOR SPIN EFFECT" section for handling).</li> <li>◇ The load contains many thick items (such as denim).</li> </ul>
<b>Odor during drying</b>	<ul style="list-style-type: none"> <li>◇ The use of detergents or softeners with strong chemical fragrances may cause odors during clothes drying.</li> <li>◇ If the appliance is not thoroughly cleaned inside, residual dirt may cause odors during clothes drying. Please clean the appliance regularly (refer to "MAINTENANCE AND CLEANING") and promptly remove clothes after the drying cycle ends.</li> </ul>

# FAULT CODES AND TROUBLESHOOTING

When the device does not operate normally and the display shows the following code, it may not be a fault. Please refer to the content in the fault code and take the corresponding measures.


Problem/ Fault	Description	Solution
F01	Water inlet fault	<p>Check the following items:</p> <ol style="list-style-type: none"> <li>1. Is the water tap open? Is the water pressure too low?</li> <li>2. Is the water inlet hose pinched?</li> <li>3. Is the water inlet hose filter clogged?</li> <li>4. Is the water inlet hose frozen?</li> </ol> <p>After troubleshooting, press the "Start/Pause" button, then press the "Confirm Start" button within 60 seconds to confirm and continue operation.</p>
F03	Water outlet fault	<p>Check the following items:</p> <ol style="list-style-type: none"> <li>1. Is the drain hose pinched? Is there water flowing in the hose?</li> <li>2. Is the drain hose filter clogged?</li> <li>3. Is the drain hose frozen?</li> </ol> <p>After troubleshooting, press the "Start/Pause" button, then press the "Confirm Start" button within 60 seconds to confirm and continue operation.</p>
F24	Overflow	<p>Pause the program first, press the "Start/Pause" button, and press the "Confirm Start" button within 60 seconds to confirm and start the program.</p> <p>If the device continues to overflow, please turn off the tap and contact a service technician.</p>
F13	Door locking fault	<p>The appliance door is closed but cannot be locked.</p> <p>First, turn off the machine, then turn it on. Press the "Start/Pause" button, and press the "Confirm Start" button within 60 seconds to confirm and start the program.</p> <p>If the fault still exists, please contact a service technician.</p>
F14	Door unlocking fault	<p>The appliance door is closed but cannot be locked.</p> <p>Turn off the machine first, then turn it on. If the fault still exists, please contact a service technician.</p>
Other	Electronic module fault	<p>Turn off the machine, then turn it on;</p> <p>Press the "Start/Pause" button, then press the "Confirm Start" button within 60 seconds to confirm and start the program.</p> <p>If the fault still exists, please contact a service technician.</p>
Unb	Unbalance alarm	<p>To clear the unbalance alarm, follow these steps:</p> <ol style="list-style-type: none"> <li>1. Entangled laundry</li> </ol> <p>If the laundry is tangled together, first turn off the machine, open the door, and loosen clothes. Then, place them back into the drum, close the door, and select the separate "Spin" program to try again.</p> <ol style="list-style-type: none"> <li>2. Insufficient laundry weight</li> </ol> <p>Turn off the machine, open the door, and add more clothes (or add one or two towels). Close the door, and select the separate "Spin" program to try again.</p>
F15-F18	Drying abnormality (applicable to models with drying function)	<p>Turn the appliance off and then turn it on.</p> <p>If the fault still exists, please contact a service technician.</p>


# SERVICING

## BEFORE CALLING MAINTENANCE PERSONNEL

When you contact the service center, please first state your device model.

Information such as model number, code/ID, model type, and serial number are displayed on the nameplate of the device.

 In case of defects, only use spare parts approved by the authorized manufacturer.

 Repairs or any warranty claims resulting from incorrect connection or use of the device are not covered by the warranty. In this case, the maintenance costs shall be borne by the user.

## USAGE RECOMMENDATIONS

When washing colored clothes for the first time, separate them by color.

When washing heavily soiled clothes, load fewer clothes each time and use more powder detergent or select the prewash function (if available).

Before starting the wash, apply a special stain remover to stubborn stains. Refer to "RECOMMENDATIONS FOR SPECIFIC STAIN REMOVAL".

If you frequently wash clothes with cold water and liquid detergent, the appliance may develop bacteria, resulting in unpleasant odors. We recommend running the "Drum Clean" (or other high-temperature) program periodically to clean the drum.

Avoid washing very small loads to prevent energy waste and poor cleaning results.

Shake out clothes that are folded or tangled together before putting them into the drum.

Use detergents specifically designed for machine washing.

If the water hardness exceeds 14°dH, use a water softener. Damage to the heater caused by improper use of water softeners is not covered by the warranty. Consult your local water supplier for water hardness information.

The use of chlorine-containing bleach is not recommended, as it may damage the heater.

If using descaling agents, bleaches, or colorants, ensure they are suitable for this washing machine.

Do not use solvents or similar chemicals (such as paint thinner, turpentine, gasoline, etc.).

Do not put hardened powder detergent into the detergent dispenser, as this may clog the internal hoses of the appliance.

Powder or liquid detergents should be added according to the manufacturer's instructions, the wash temperature, and the selected washing program.

When using thick liquid fabric care products, it is recommended to dilute them with water to prevent clogging the detergent drawer drainage outlet.

Liquid detergents are suitable for washing programs without a prewash cycle.

Be careful not to confuse detergent and softener.

The higher the spin speed, the less moisture remains in the clothes. Therefore, using an appliance with a drying function is more economical and efficient for drying clothes.

# RECOMMENDATIONS FOR SPECIFIC STAIN REMOVAL

Before using specialty stain removers, try natural, environmentally friendly methods to remove lighter, stubborn stains. It is easier to remove stains if you treat them promptly!

Please wash with cold water (warm water) according to the following stain removal methods. Do not use hot water!

Stain type	Stain removal method
Mud	<p>If the stain is dried mud, first scrape it off the garment, then put it into the machine for washing.</p> <p>For stubborn stains, soak the garment first in an enzyme-based stain remover before washing.</p> <p>For less stubborn stains, pre-treat the garment with liquid or powder detergent manually before washing.</p>
Antiperspirant	<p>Before placing the garment in the machine for washing, apply liquid detergent directly to the stains.</p> <p>For stubborn stains, use a stain remover for treatment. or wash with an oxygen bleach.</p>
Tea	Soak or wash the garment in cold water. Add the stain remover if necessary.
Chocolate	Soak or wash the garment in warm soapy water, then apply lemon juice and rinse.
Ink	Before starting the wash, apply a stain remover to stains. You may also use the denatured alcohol, turn the garment inside out and place a tissue paper under the stain, apply alcohol from the back side of the garment, then wash the garment thoroughly after treatment.
Marker pen writing	Dilute some starch with water, then apply it to the stain. After it dries, brush it off with a brush; then, put the garment into the machine for washing.
Baby stains (urine, mud, or food)	Soak the stained area in warm water for at least half an hour before putting the garment into the machine for washing. To make it easier to remove stains, an enzyme-based detergent can be added.
Grass	Before putting the garment into the washing machine, soak them in an enzyme-based detergent first. You can also soak it in diluted lemon juice or white vinegar (for about 1 hour) to remove grass stains.
Egg	Soak the garment in an enzyme-based detergent. Soak it in cold water for at least 30 minutes. If the stain is stubborn, you can soak it for several hours. Then, put the garment into the machine for washing.
Coffee	Soak the garment in salt water. For older stains, you can soak it with a mixture of castor oil, ammonia, and alcohol.
Shoe polish	Apply edible oil to the stain, then wash the garment.

Stain type	Stain removal method
Blood	For fresh blood stains, first rinse the garment with cold water, then put it into the machine for washing. For dried blood stains, soak the garment in an enzyme-based detergent. Then, put the garment into the machine for washing. If the stain remains, consider using a bleach product suitable for the fabric type.
Glue or chewing gum	Put the garment in a bag, then place it in the refrigerator until the stains harden. Scrape it off with a dull knife. Dilute the stain with a prewash stain remover and wash thoroughly. Finally, put the garment into the machine for washing.
Makeup	Use a stain remover to pre-wash, then put the garment into the machine for washing.
Butter	Before putting the garment in the washing machine, apply a stain remover to the stains. Then wash with hot water (temperature permitted by the garment).
Milk	Soak the garment in an enzyme-based detergent. Soak the garment for at least 30 minutes. If the stain is stubborn, you can soak it for several hours. Then, put the garment into the machine for washing.
Juice	Apply salt water to the stains. Leave it for a short while, then wash. Alternatively, before putting the garment in the washing machine, apply baking soda, white vinegar, or lemon juice to the stains. For old stains, apply castor oil to the stains, and rinse with cold water after 20 minutes. Finally, put the garment into the machine for washing.
Wine	Soak the garment in cold water for at least 30 minutes. Use the detergent at the same time. Then, put the garment into the machine for washing.
Wax	Put the garment in the refrigerator until the wax stains harden. Then scrape it off. Place a piece of paper towel over the stain, then iron on top until the paper towel absorbs the remaining wax.
Sweat	Before placing the garment in the machine for washing, apply liquid detergent directly to the stain.
Chewing gum	Put the garment in the refrigerator until the chewing gum harden, then scrape it off. Then, put the garment into the machine for washing.

# DISPOSAL



The packaging is made of environmentally friendly materials and can be recycled, reused, processed, or destroyed without causing harm to the environment. For this purpose, the packaging materials are marked with appropriate labels.

This icon on the product or its packaging indicates that this product cannot be disposed of as household waste. Please dispose of this product at a collection point for the recycling of electrical and electronic equipment.

When the device reaches the end of its life and needs to be scrapped, please remove all power cords, destroy door locks and switches to prevent the doors from locking. This is to avoid the risk of children or small animals becoming trapped inside.

The labeling of the appliance complies with the provisions of the European WEEE Directive.

Ensure this product is handled correctly and avoid inappropriate waste disposal measures for this product, as this helps prevent potential negative impacts on the environment and human health. For more information on product recycling, please contact your local municipal department, your household waste disposal service center, or the store where you purchased the product.

**Hisense**  
life reimagined